



# Neuroprotective Effect of *Dacryodes edulis* Ethanolic Leaf Extract on the Prefrontal Cortex and Long-term Learning and Memory in Wistar Rats of Ketamine-Induced Neurotoxicity

Sadeyeng E. Anani <sup>a\*</sup>, Michael E. Oku <sup>a</sup>, Eru M. Eru <sup>a</sup>,  
Kelechi C. Uruakpa <sup>a</sup>, Ifiok F. Bassey <sup>a</sup>,  
Gabriel U. Udo-affah <sup>a</sup>, Paul A. Odey <sup>a</sup>,  
Eric A. Agaba <sup>a</sup>, Theresa E. Isamoh <sup>a</sup>,  
Williams A. Nnenna <sup>a</sup>, Nsikak N Umoh <sup>a</sup>,  
Cletus U. Ajang <sup>a</sup> and Anozeng O. Igiri <sup>a</sup>

<sup>a</sup> Department of Anatomical Sciences, Faculty of Basic Medical Sciences, University of Calabar, Nigeria.

## **Authors' contributions**

*This work was carried out in collaboration among all authors. All authors read and approved the final manuscript.*

## **Article Information**

### **Open Peer Review History:**

This journal follows the Advanced Open Peer Review policy. Identity of the Reviewers, Editor(s) and additional Reviewers, peer review comments, different versions of the manuscript, comments of the editors, etc are available here: <https://www.sdiarticle5.com/review-history/121776>

**Original Research Article**

**Received: 23/06/2024**

**Accepted: 25/08/2024**

**Published: 29/08/2024**

\*Corresponding author: E-mail: [sadeyenganani12@unical.edu.ng](mailto:sadeyenganani12@unical.edu.ng);

**Cite as:** Anani, Sadeyeng E., Michael E. Oku, Eru M. Eru, Kelechi C. Uruakpa, Ifiok F. Bassey, Gabriel U. Udo-affah, Paul A. Odey, Eric A. Agaba, Theresa E. Isamoh, Williams A. Nnenna, Nsikak N Umoh, Cletus U. Ajang, and Anozeng O. Igiri. 2024. "Neuroprotective Effect of *Dacryodes Edulis* Ethanolic Leaf Extract on the Prefrontal Cortex and Long-Term Learning and Memory in Wistar Rats of Ketamine-Induced Neurotoxicity". *Asian Journal of Research and Reports in Neurology* 7 (1):86-97. <https://www.journalajorrin.com/index.php/AJORRIN/article/view/106>.

## ABSTRACT

**Introduction:** *Dacryodes edulis* (African pear) is a medicinal plant known for its medicinal qualities. Its extracts are said to possess many health-promoting constituents such as antioxidants that have been used to treat many illnesses, including neurological disorders. Drug-induced neurological disorders usually affect the normal functioning of brain parts, including the prefrontal cortex and hippocampus.

**Aims:** The aim of this study was to investigate the effect of *Dacryodes edulis* ethanolic leaf extract on the cytoarchitecture of the prefrontal cortex. Another objective was to determine spatial learning and memory in the rats.

**Methods:** Forty-six (46) rats were used for this study. Sixteen (16) rats were used for acute toxicity test of the leaf extract, while 30 were divided into five groups of six rats each. The control group was designated as group A and given food and water only, while the Ketamine control group (group B) was administered with 100mg/kg body weight "BW" of Ketamine. Groups C, D and E were given Ketamine (100mg/kg BW) + Diazepam (0.3mg/kg BW), Ketamine (100mg/kg BW) + 1000mg/kg BW *Dacryodes edulis* ethanolic leaf extract and Ketamine (100mg/kg BW) + 500mg/kg BW *Dacryodes edulis* ethanolic leaf extract respectively for 28 days. The ketamine and diazepam were administered intraperitoneally, while the leaf extract was administered with the aid of an oro-gastric tube. The histology of the prefrontal cortex, as well as spatial learning and memory were determined afterwards.

**Results:** The histological result revealed marked atrophic cellular changes in the prefrontal cortex of groups B rats (treated with Ketamine alone) and C (treated with Ketamine and Diazepam) as revealed by the cytometric study. Group D rats treated with 1000mg/kg BW of *Dacryodes edulis* extract displayed average neuronal cell size relatively similar to that of group A rats, while group E rats treated with 500mg/kg BW of *Dacryodes edulis* extract showed marked atrophic cellular changes. The neurobehavioral study with the use of Morris water maze revealed significant decrease in escape latency in group D during the acquisition and reversal training period when compared to groups B, C and E. During the probe trial day, group A exhibited the longest duration spent in the retention quadrant, while group D rats (1000mg/kg BW of *Dacryodes edulis* extract) spent a longer time in the quadrant when compared to groups B, C and E. This is indicative of improved spatial learning and memory capability in the group D rats. The result therefore indicates ameliorative potential of the leaf extract but only in the high dose group.

**Conclusion:** The leaf extract of *Dacryodes edulis* can be considered as an alternative neuroprotective drug in cases of Ketamine-induced neurodegeneration.

**Keywords:** *Dacryodes edulis*; Ketamine; histology; prefrontal cortex; Morris water maze.

## 1. INTRODUCTION

The prefrontal cortex is a part of the brain that is situated around the frontal lobe of the cerebrum. It is a key brain region that is involved in planning complex cognitive behaviour, expressing personality traits, making decisions and regulating social behaviour [1]. Therapeutic drugs used on the brain can become a source of worry when utilized inappropriately, leading to neurotoxicity. One of such drugs is Ketamine which is a dissociative drug known for its use as a recreational drug due to its pleasant hallucinogenic and euphoric side effects. In surgery situations, it is sometimes used with benzodiazepines in order to help counteract the adverse psychological symptoms that may present thereafter [2]. The neurotoxicity caused by its abuse is said to be associated with

oxidative tissue damage to brain tissue, as well as neuro-cognitive deficits. The brain is really sensitive to damage by reactive-oxygen species because of its relatively small antioxidant capacity [3]. Ketamine overdose can lead to numerous troubling symptoms that can impact mental and physical functioning [4,3,5]. A percentage of adults (10-20%) go through adverse psychiatric effects after anesthesia with ketamine, and these include dysphoria, hallucination and emergence delirium [6,7]. Ketamine functions as an antagonist on the N-Methyl-D-Aspartate "NMDA" receptors, which are ubiquitously distributed within the central nervous system. Specifically, it exerts its non-competitive binding affinity to phencyclidine-binding site on the NMDA-receptor, thereby impeding the entry of Ca<sup>2+</sup> into the cells. Consequently, this disruption of calcium-mediated signalling

between cortico-cortical and cortico-subcortical regions culminates in multifaceted pharmacological effects, including analgesia, perturbation of neural plasticity and induction of dissociative anesthesia [8,9]. Many studies have illustrated the therapeutic impact of medicinal plants, especially in the amelioration of tissue-toxic effects caused by exposure to toxic substances [10,11,12,13,14,15,16]. One of such plants is *Dacryodes edulis* (African pear) which has a history of uses medicinally. It is also known as African plum, African palm, native pear, bush butter tree, Eben or Ube (in Nigeria). The fruit is highly nutritious, comprising of lipids, proteins and provitamins. Many health-enhancing chemical constituents such as alkaloids, tanins, flavonoids and saponins are present in parts of the plant including its leaves. The bio-constituents obtained from its leaves are said to exhibit antioxidant, anti-sickle cell and antimicrobial activities [17]. According to Sadhwani [18], antioxidants in plants have been utilized for the treatment and management of many illnesses, including neurological disorders. The rich antioxidant property of the leaf makes it relevant for this study which involves its effect on the prefrontal cortex and neuro-behaviour in rats of Ketamine-induced neurotoxicity.

## 2. MATERIALS AND METHODS

### 2.1 Experimental Design

Forty-six (46) adult male albino Wistar rats (140-200g) were procured from the College of Medical sciences animal house, University of Calabar. The rats were sheltered in optimal environmental conditions of humidity, temperature and daylight/dark cycle. They were fed with standard rodent feed and distilled water *ad libitum*. They were kept in this environment for a period of twenty-one days before the commencement of the experiment proper. Furthermore, sixteen (16) rats were used for acute toxicity test of the leaf extract, while 30 were divided into 5 groups and placed in properly ventilated plastic cages labelled A to E, with each cage containing six rats. Group A represented the normal control and was administered with animal feed and distilled water only; group B (ketamine control group) received 100mg/kg BW of Ketamine intra-peritoneally "IP" only; group C received 100mg/kg BW Ketamine (IP) and 0.3mg/kg BW Diazepam (IP), group D received 100mg/kg BW (IP) Ketamine and 1000mg/kg BW *Dacryodes edulis* ethanolic leaf extract; while group E received 100mg/kg BW Ketamine (IP) and 500mg/kg BW *Dacryodes edulis* ethanolic leaf

extract. The extract was given orally to the rats with the aid of an oro-gastric tube, while Ketamine and Diazepam were administered to the rats intra-peritoneally. The Ketamine and the leaf extract were administered to the rats (in groups B, D and E) concurrently for four weeks, while it was administered concurrently with Diazepam (in group C rats) for the same period. Twenty-four hours after the last administration, the experimental animals were subjected to Morris water maze (MWM) test in order to assess spatial learning and memory using Morris method. The animals were then sacrificed and the brain was removed from the skull. The prefrontal cortex was then dissected and processed for histological staining.

### 2.2 Drug

Ketamine hydrochloride (PharmaTher, USA) and Diazepam (Roche, USA) injectibles were procured from Bez pharmacy in Calabar Municipality, Calabar, Cross River state, Nigeria. Diazepam was used as the synthetic drug in this study in order to compare its effects with that of the leaf extract.

### 2.3 Plant Acquisition, Identification and Preparation of Extract

Fresh leaves of *Dacryodes edulis* were meticulously sourced from a residence at Ikot Omin, 8 miles, Calabar, Cross River state, Nigeria. The leaves were identified and authenticated at the department of Botany, Faculty of Science, University of Calabar. They were then given a voucher number Bot/Herb/UCC/0189.

Plant extract preparation: The fresh *Dacryodes edulis* leaves obtained were subsequently washed and air-dried in the laboratory in order to maintain their quality. The dried samples were blended into powder and 100g of the powdered leaves was immersed in 80% alcohol. The mixture was vigorously agitated using an electric blender. To obtain a purified filtrate, the mixture underwent a double-filtration process, using chess cloth and Whatman No.1 filter paper. The filtrate was obtained and concentrated using a rotary evaporator with regulated temperatures of 40°C to 50°C, yielding a crude paste residue which was then preserved (in a sterile container) in a cool dry environment until time for use.

### 2.4 Acute Toxicity Test

Sixteen rats were employed for the determination of the lethal dose "LD"<sub>50</sub> of *Averrhoa carambola*

fruit extract using Lorke's method. The rats were separated into four groups (3 rats each) for the first phase and received 500mg, 1000mg, 1500mg and 2000mg/kg BW respectively. They were observed for twenty-four hours. The second phase involved two groups of 2 rats each which were given 4000mg and 6,000mg/BW of the extract respectively. There was no death recorded and this agrees with a study by Ononamadu which illustrated that the leaf extract is non-lethal in any concentration [17]. The LD<sub>50</sub> was therefore >5,000mg/kg so we decided to make use of 5,000mg/kg as the LD<sub>50</sub>. The higher dose of the extract was calculated as 20% of 5,000mg/kg (equal to 1,000mg/kg) of the leaf extract, while the lower dose was calculated as 10% of 5,000mg/kg (equal to 500mg/kg) of the leaf extract. The extracts were then administered to the rats based on their weights.

**Morris water maze test:** Twenty-four hours after the last administration, the rats were made to undergo Morris water maze "MWM" test so as to assess their spatial learning and memory. Extra maze visual cues were introduced to the animals to help them locate an escape platform hidden under the surface of non-transparent water. Their success in this activity depends largely on their capacity to memorize and master positions within the immediate environment. The concealed platform type of MWM presents a spatial memory test that is associated with hippocampal injury, while the detectable platform version of MWM is not associated with the hippocampus. The Morris water maze activity went on for a period of seven days. The rats were trained for 6 days; acquisition training with the concealed escape platform (North-West quadrant) was done for the first 3 days, while reversal training with the concealed escape platform (South-East quadrant) was done between day 4 and 6. Day 7 involved a probe trial which was conducted without an escape platform [10].

### **2.5 Histological Study with Hematoxylin and Eosin Stain "H&E"**

The paraffin slides containing prefrontal cortical tissue underwent a dewaxing process involving two rounds of exposure to xylene for 5 minutes each. Rehydration was done using decreasing concentrations of alcohol of alcohol and thereafter, rinsing under tap water. The sections were then subjected to staining with hematoxylin, then counter-staining with Eosin. After rinsing, the sections underwent dehydration (using ascending grades of alcohol) and clearing in

xylene. Following this, the sections were allowed to air-dry, then few drops of dibutylphthalate polystyrene xylene "DPX" were applied to the slide surfaces before a coverslip was placed on top. The resultant slide was then viewed under a light microscope for examination [19].

### **2.6 A Cytometry Study of Sections of the Hippocampus was Done Using Image J (version 1.54)**

It was further analysed and visualized with the use of Microsoft Excel (version 2023). This was done to show the average size of cells across the sections.

## **3. RESULTS AND DISCUSSION**

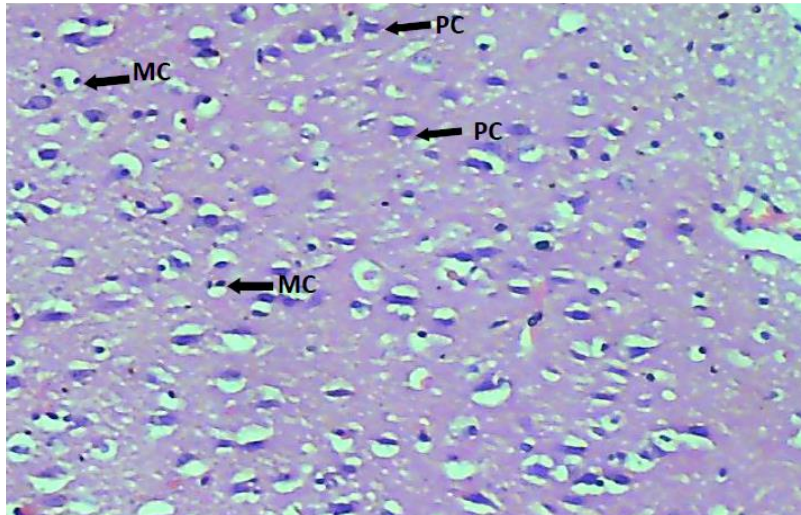
### **3.1 Results**

The resultant cytometric study showed marked atrophic neuronal cellular changes in the photomicrograph of the prefrontal cortex (H & E) of groups B (Plate 2) and C (Plate 3) rats (Fig. 1). Group A (Plate 1) rats displayed a normal prefrontal cortical microstructure (Fig. 1). Group D (Plate 4) rats treated with treated with 1000mg/kg BW of *Dacryodes edulis* extract displayed average neuronal cell size relatively similar to that of group A rats (Fig. 1), while group E (group 5) rats treated with 500mg/kg BW of *Dacryodes edulis* extract showed marked atrophic cellular changes (Fig. 1).

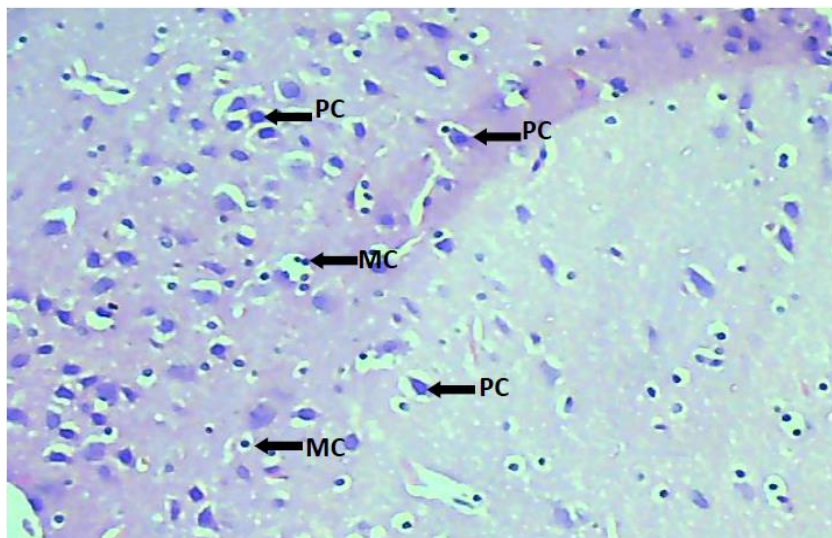
The neurobehavioral study with the use of Morris water maze revealed significant decrease in escape latency in group D (Fig. 2) (throughout the acquisition period) when compared to groups A, B, C and E. This is indicative of improved spatial learning and memory capability in the group D rats. During the reversal training period, a significant decrease in escape latency was observed in groups A and D (Fig. 3) when compared to groups B, C and E, also indicative of learning enhancement in group D rats. During the probe trial day, group A (Fig. 4) exhibited the longest duration spent in the retention quadrant (South/West), while groups B, C and E spent far less time in the same quadrant. Interestingly group D rats (Fig. 4) which were treated with the higher dose (1000mg/kg BW) of the extract spent more time in the retention quadrant compared to groups B, C and E. Several literatures exist on Ketamine inducing dose-dependent memory impairment assessed using MWM [20,21,22]. The probe trial results indicate that group D rats displayed unimpaired spatial working memory,

implying that the administered extract has the potential to augment learning and memory in rodents. The mechanism of action by this plant in counteracting the effects of ketamine may be as a result of its antioxidant property. This is in line with Eru et al. [10], Lauriane et al. [23], Eru et al.

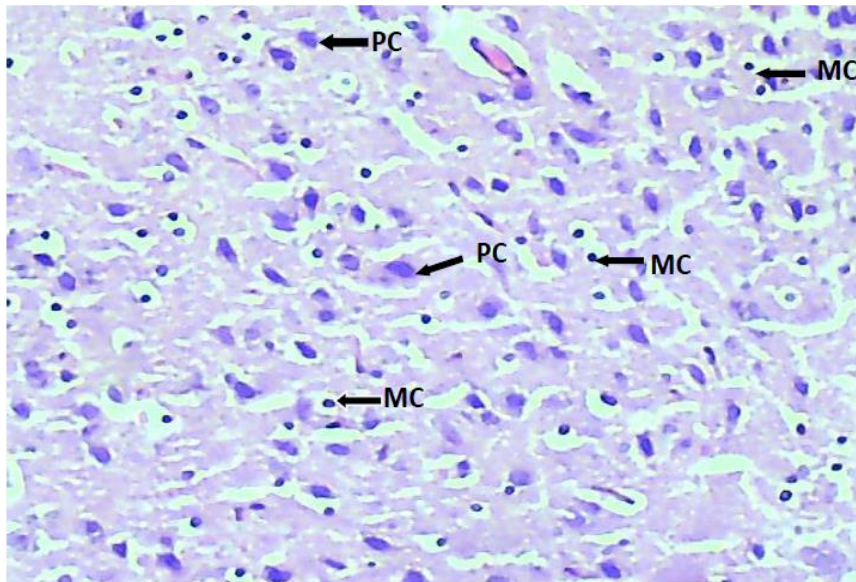
[13], Folawiyo et al. [24] and Beppe et al. [16] who reported that *Talinum triangulare*, *Ocimum bailicum*, *Telfara occidentalis*, *Ocimum gratissimum* and *Albizia adianthifolia* respectively were able to enhance learning and memory due to their high antioxidant capacity.



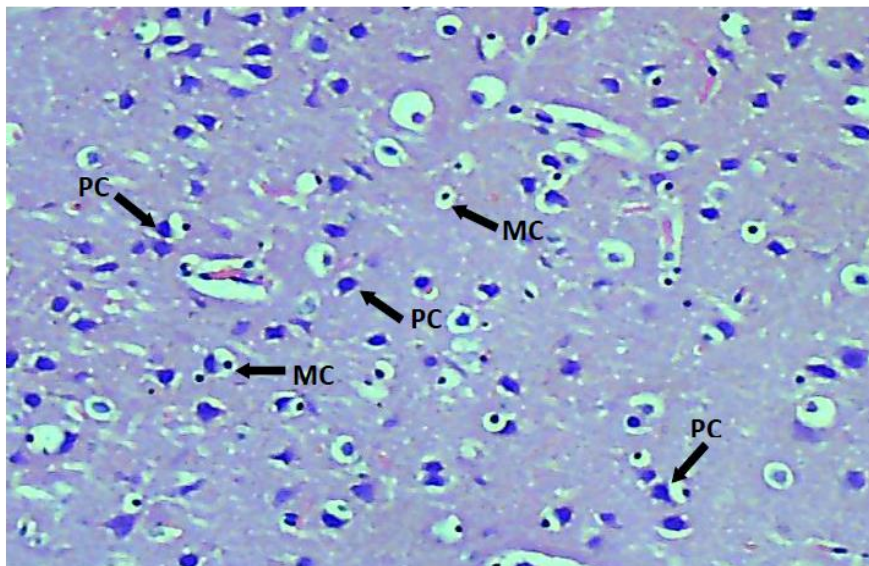
**Plate 1. Photomicrograph (X400) of a section of the prefrontal cortex (H&E-stained section) of group A rats (normal control group) displaying evenly distributed neuronal cell bodies of various sizes and shapes, with predominant pyramidal cells (PC) having triangular cell shapes and a thin rim of cytoplasm. There are also abundant neuropil and scattered microglia cells (MC)**



**Plate 2. Photomicrograph (X400) of a section of the prefrontal cortex (H&E-stained section) of group B rats treated with 100mg/kg BW ketamine showing evenly distributed neuronal cell bodies of various sizes and shapes, with predominant sparsely populated pyramidal cells (PC). The neuronal cell bodies display atrophic changes. There are also abundant neuropil and scattered microglia cells (MC) present with predominant pyramidal cells which have triangular cell shapes and a thin rim of cytoplasm**



**Plate 3. Photomicrograph (X400) of a section of the prefrontal cortex (H&E-stained section) of group C rats (treated with ketamine and 0.3mg/kg BW diazepam) showing evenly distributed neuronal cell bodies of various sizes and shape with predominant sparsely pyramidal cells (PC) having a triangular cell shape and a thin rim of cytoplasm. The neuronal cell bodies display atrophic changes. There are abundant neuropil and scattered microglia cells (MC) present**



**Plate 4. Photomicrograph (X400) of a unit of the prefrontal cortex (H&E-stained section) of group D rats (treated with ketamine + 1000mg/kg BW *Dacryodes edulis* extract) showing densely populated neuronal cell bodies of various sizes and shapes. There are proliferating microglia cells (MC) scattered among the neuronal cells**

### 3.2 Discussion

According to a study by Shafri et al. [25], neurotoxic tissue damage is possible in cases of Ketamine overdose. There exist documented characteristics of degenerating neuronal tissue.

These include hypertrophied neuronal cells, eosinophilic neurons, astrogliosis, reactive microglial cells, nuclear pyknosis, finely vacuolated neuropil adjacent to degenerating neurons and vacuolation within the hippocampal molecular layer [26,27].

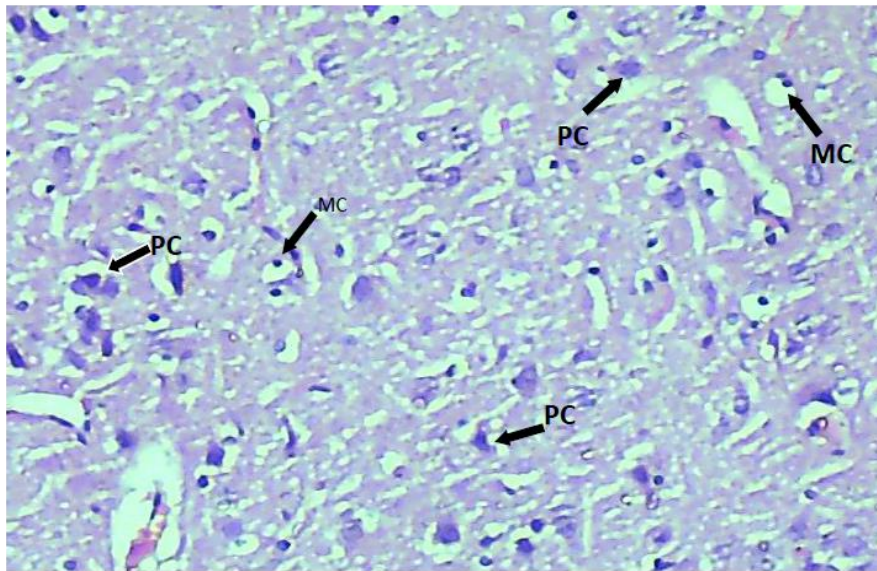


Plate 5. Photomicrograph (X400) of a section of the hippocampus (H&E-stained section) of group E rats (treated with ketamine + 500mg/kg BW *Dacryodes edulis* extract) showing densely populated neuronal cell bodies of various sizes and shapes. There are proliferating microglia cells (MC) scattered among the neuronal cells

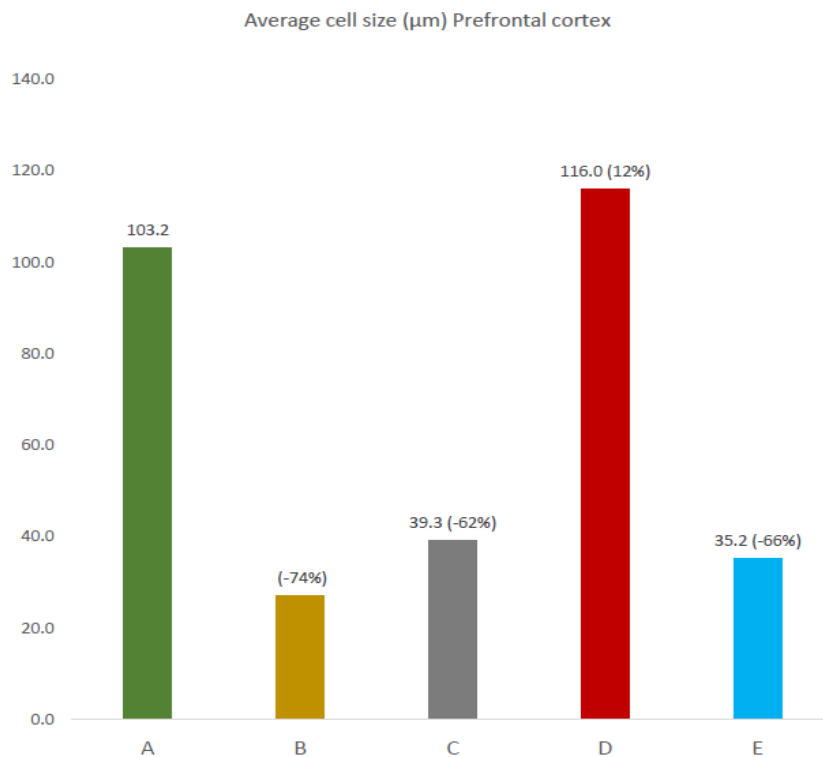
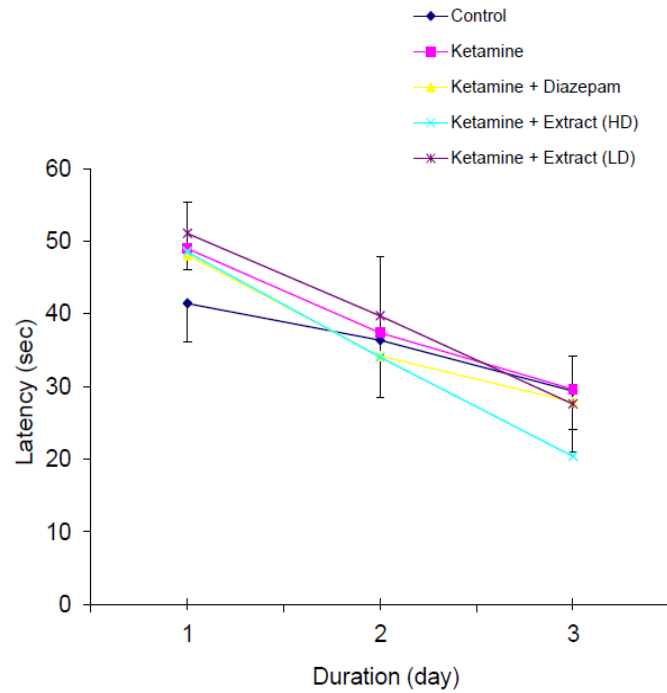
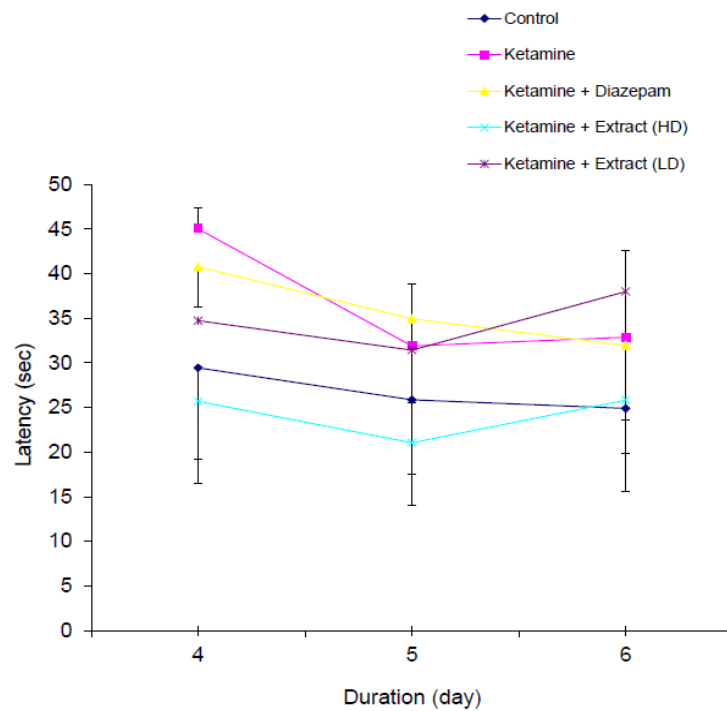


Fig. 1. Effect of ketamine, diazepam and the different doses of *Dacryodes edulis* leaf extract (1000mg/kg BW and 500mg/kg BW) on prefrontal cortical neuronal cell size based on the H&E sections. Y-axis = average size ( $\mu\text{m}$ ) of cells in section, X-axis = experimental groups (B to E) showing % increase or decrease in average cell size compared to group A

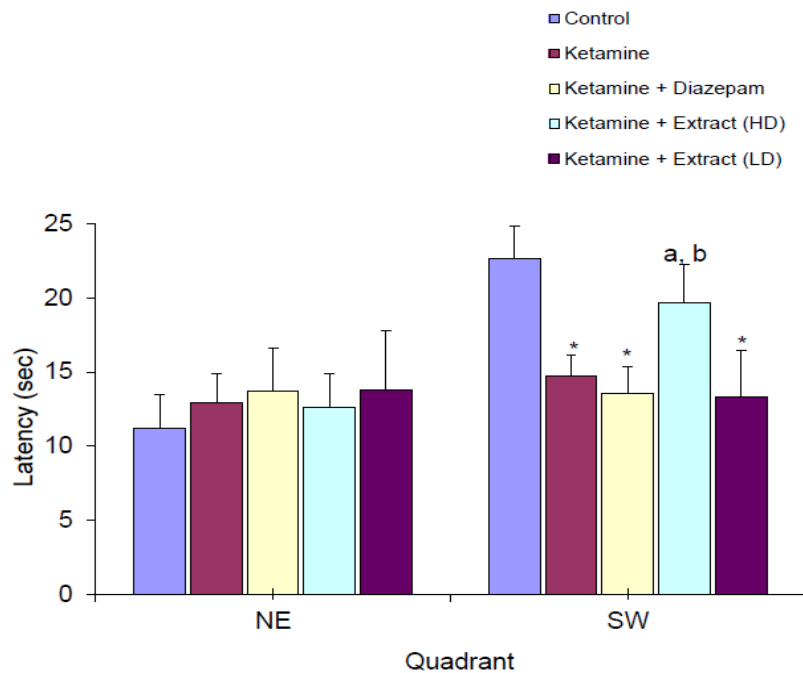


**Fig. 2. Comparison of swim latency amongst the groups A-E during acquisition training on days 1, 2 and 3 of Morris water maze test**  
Values are expressed as mean +SEM



**Fig 3. Comparison of swim latency amongst the groups A-E during reversal training on days 4, 5 and 6 of Morris water maze test**  
Values are expressed as mean +SEM





**Fig. 4. Swim latency in the north east and south west quadrants during probe trial of the Morris water maze test involving the groups A-E.**

Values are expressed as mean +SEM.

\* = significantly different from normal control at  $p < 0.05$

a = significantly different from ketamine control at  $p < 0.05$

b = significantly different from diazepam at  $p < 0.05$

The histological changes observed in group B rats imply cellular degeneration and give evidence to the fact that Ketamine overdose can cause neurodegeneration as reported by Giroux et al. [28], Shafri et al. [25] and Ding et al. [22]. The precise underlying mechanism responsible for this degeneration remains elusive, but based on postulations and theoretical considerations, it has been hypothesized that the process of generation of free radicals may be consequential in the given context [29]. Intriguingly, a research by Deveci and his team gave more illustration on this intricate process. They said that through continuous exposure to Ketamine, the NMDA receptor can undergo upregulation and create a molecular environment that is conducive for toxic accumulation of calcium within neuronal cells following cessation of Ketamine administration. This dysregulation calcium homeostasis then serves as a catalyst for heightened production of reactive oxygen species "ROS", which in turn triggers a cascade of events that lead to oxidative tissue damage [30,31]. The neuronal cell degeneration as well as the cognitive impairment (MWM test) observed in group C may be due to the effect of Ketamine being administered concurrently with Diazepam, even

though Diazepam stands as one of the drugs used medically to reduce the risk of neurotoxicity from NMDA receptors [2,32]. According to Perez [33] and Kalsi et al. [9], Ketamine used in combination with drugs such as Diazepam can lead to dire and unpredictable outcomes such as decreased heart function, memory loss, coma and eventual death.

The results obtained also showed the efficacy of *Dacryodes edulis* leaf extract in promoting neuronal cell repair in group D rats. This was not the case for group E rats as neuronal cell degeneration was observed therein. This may be due to its reduced antioxidant capacity based on the decreased dosage of extract. Amongst the experimental groups, only group D rats demonstrated ameliorative potential on neuronal cells in the prefrontal cortex. The findings suggest that the therapeutic effects of the extract can be attributed to its rich phenol (antioxidant) content. As suggested by Sadhwani [18] and Pharm-Huy et al. [34], phenols possess the ability to counteract excessive free radicals, thereby safeguarding cells against their toxic effects. Furthermore, phenols have been implicated in the therapy and management of

many neurological disorders. The findings of this research align with previous studies conducted by Eru et al. [10], Eru et al. [11], Boussadia et al. [14], Anani et al. [12], Seddik et al. [35], and Kharoubi et al. [36], Ifiok et al. [37]. Eru et al. [38] and Eru et al. [39]. which have reported on ameliorative effects of plants rich in phenols on areas of the brain affected by toxic substances. Overall, the ameliorative effects (both in the histological study and MWM test) were better in group D than that of group E rats. This may be due to the decreased neuroprotective action considering the administration of a lower dose of the extract [40].

#### 4. CONCLUSION

The present study illustrated ameliorative potentials of *Dacryodes edulis* ethanolic leaf extract on the prefrontal cortex of rats of Ketamine-induced neurotoxicity, as well as neurobehaviour but only in the higher dose group. It also showed that the administered dosage of Ketamine for the given period of time led to neuronal cell injury in the prefrontal cortex, as well as cognitive impairment in the rats, thereby confirming neurotoxicity.

#### DISCLAIMER (ARTIFICIAL INTELLIGENCE)

The authors hereby declare that no generative AI technologies such as Large Language Models (ChatGPT, COPILOT, etc) and text-to-image generators have been used during writing or editing of manuscripts.

#### CONSENT

It is not applicable.

#### ETHICAL APPROVAL

All authors hereby declare that "Principles of laboratory animal care" (NIH publication No. 85-23, revised 1985) were followed as well as specific national laws where applicable. All experiments have been examined and approved by Faculty Animal Research Ethics committee, Faculty of Basic Medical Sciences, University of Calabar, Cross River state, Nigeria and given a registration number 190ANA3023.

#### ACKNOWLEDGEMENTS

The authors hereby acknowledge the assistance rendered by the management and staff of the department of Anatomical sciences, University of Calabar. We also acknowledge the staff of the

department of Physiological Sciences, University of Calabar and the department of Histopathology, University of Calabar Teaching Hospital, Calabar, Cross River state, Nigeria for allowing us access to their facilities in the course of this study.

#### COMPETING INTERESTS

Authors have declared that no competing interests exist.

#### REFERENCES

1. Science Of Psychotherapy; 2017 Accessed 20 July 2022. Available:<https://www.thescienceofpsychotherapy.com/prefrontal-cortex/>.
2. Orhuhu VJ, Vashisht R, Claus LE, Cohen SP. Ketamine toxicity. [Online]. 2023 [cited on 2021 September 06]. Available:<https://www.ncbi.nlm.nih.gov/books/NBK541087/>.
3. Rahal A, Kumar A, Singh V, Yadar B, Tiwari R, Chakraborty S et al. Oxidative stress, prooxidants and antioxidants: the interplay. Biomed Res Int.2014;761264.
4. Rap J. Ketamine overdose symptoms, treatment and long-term outlook; 2022. Accessed 13 January 2023. Available:<https://americanaddictioncenters.org/ketamine-abuse/overdose-dangers>.
5. Cadet JL, Bisango V. Glial neural ensembles: partners in drug addiction associated synaptic plasticity. Front Pharma. 2014;5:204.
6. Marland S, Ellerton J, Andolfatto G, Strapazzon G, Thomassen O, Bradner B et al. Ketamine: uses in anesthesia. CNS Neurosci Ther. 2013;19(6):381-389.
7. Strayer RJ, Nelson LS. Adverse effects associated with Ketamine for procedure sedation in adults. Am J Emerg Med. 2008; 26(9):985-1028.
8. Rosenbaum SB, Gupta V, Patel P, Palacios JL. Ketamine. Florida: Statpearls Publishing LLC. 2022;29262083.
9. Kalsi SS, Wood DM, Morgan PI. The epidemiology and patterns of acute and chronic toxicity associated with recreational ketamine use. Emerg Health Threats J. 2011;(4):24149025.
10. Eru EM, Anani SE, Paulinus SO. Otu ME, Uruakpa KC, Umoh NM et al. Scopolamine-induced Alzheimer's disease in Wistar rats: aqueous Talinum triangulare potency on the hippocampal Nissl bodies

- and long-term learning and memory. Trop J Nat Prod Res. 2022;6(11):117-122.
11. Eru EM, Paulinus SO, Udo-affah GU, Uruakpa KC, Oku ME, Anani SE et al. Hippocampal astrogliotic reduction in scopolamine hydrobromide-induced Alzheimer's cognitive dysfunction Wistar rats following administration of Telfairia occidentalis (Hoof F.) Niger J Physiol sci. 2021;36:241-244.
  12. Anani SE, Eru EM, Okon DE, Uruakpa KC, Ugbem TI, Igiri AO. The effect of Averrhoa carambola (Star Fruit) aqueous fruit extract on the hippocampal astrocyte expression following diazepam-induced neurotoxicity in Wistar rats. Trop J Nat Prod Res. 2020;4(12):1170-1173.
  13. Eru EM, Paulinus SO, Igiri AO, Akpaso MI. Enhanced effect of aqueous extract of Telfaria occidentalis seeds extract on the microstructure of the hippocampus of scopolamine hydrobromide-induced cognitive dysfunction rats. Asian J Res Reports Neurol. 2020;2(1):5-10.
  14. Boussadia A, Kharoubi O, Lahouel Z, Benglia A, Aoues A. Effect of aqueous Salvia officinalis extract on aluminium-chloride-induced neurotoxicity in female rats. Int J Pharma Res Allied Sci. 2020;9(2):139-150.
  15. Hussein Y. Histological and immunohistochemical changes in the hippocampus of adult male albino Wistar rats treated with Amethopterin and the possible protective role of Moringa leaves extract. Egypt J Anat. 2017;40(2):294-300.
  16. Beppe BJ, Dongmo AB, Foye, HS, Tsabang N, Olteanu Z, Cioanca O et al. Memory-enhancing activities of aqueous extract of Albizia adianthifolia leaves in the 6-hydroxydopamine lesion rodent model of Parkinson's disease. Complement Altern Med. 2014;(14):142.
  17. Ononamadu CJ, Alhassan AJ, Ibrahim A, Imam AA, Ighebor GC, Owolarafe, TA et al. Methanol-extract fractions of Dacryodes edulis leaves ameliorate hyperglycemia and associated oxidative stress in streptozotocin-induced diabetic rats. J Evid Based Integr Med. 2019;24.
  18. Sadhwani S. Carambola (starfruit) Averrhoa carambola; 2015 Accessed 17 April 2021. Available:<https://www.ayurtimes.com/carambola-starfruit-averrhoa-carambola/>.
  19. Avwioro OG. Histochemistry and tissue pathology, principles and techniques; 2010. Accessed 20 August 2020. Available:[https://www.researchgate.net/publication/315797013\\_Histochemistry\\_and\\_Tissue\\_Pathology](https://www.researchgate.net/publication/315797013_Histochemistry_and_Tissue_Pathology).
  20. Shi M, Ding J, Li L, Bai H, Li X, Lan L et al. Effects of ketamine on learning and memory in the hippocampus of rats through ERK, CrEb and ARC. Brain sci. 2021;1(1):27.
  21. Li M, Xie A, Liu Y, Zeng Q, Huang S, Huang Q et al. Ketamine administration leads to learning and memory dysfunction and decreases serum brain-derived neurotrophic factor in rats. Front Psychiatry. 2020;11.
  22. Ding R, Li Y, Du A, Yu H, He B, Shen R et al. Changes in hippocampal AMPA receptors and cognitive impairments in chronic ketamine addiction models: another understanding of ketamine CNS toxicity. Nature Res. 2016;6:38771.
  23. Lauriane S, Badiana N, Ngah E, Touyem WSN, Sidiki N. Ocimum basilicum (Lamiaceae) leaves aqueous extract improves learning and memory in the monosodium glutamate-induced neurotoxicity model of Alzheimer's disease through attenuating brain oxidative damage in experimental mice. GSC Biol Pharma Sci. 2021;19(1):204-212.
  24. Folawiyo AA, Besong EE, Famurewa A, Okorocho A, Ajayi AF, Ogonia EE. Hydromethanolic leaf extract of Ocimum gratissimum improves visuo-spatial learning and memory in mice. World J Pharma Res. 2018;8(1):175-192.
  25. Shafri MAM, Jais AMM, Jaffri JM, Kim MK, Ithnin H, Mohammed F. Cresyl violet staining to access neuroprotective and neuroregenerative effects of Hanian traditional extract against neurodegenerative damage of ketamine. Int J Pharma Pharma Sci. 2012;4(4).
  26. Garman RH. Histology of the central nervous system. SAGE Journal of Toxicol Pathol. 2010;39:(1).
  27. Iacono D, O'Brien R, Resnick SM, Zonderma AB, An Y, West MJ et al. Neuronal hypertrophy in asymptomatic Alzheimer's disease. J Europathol Expt Neurol. 2008;67(6):578-589.
  28. Giroux M, Helie P, Burns P, Vachon P. Anesthetic and pathological changes following high doses of ketamine and

- xylazine in sprague dawley rats. Jpn Assoc Lab Animal Sci. 2015, 64 (3): 253-260.
29. Zou L, Zhou T, Pannell BK, Ziegles AC, Best TM. Biological and psychological role of reactive oxygen species: the good, the bad and the ugly. Acta Physiologica. 2015;214:329–348.
  30. Deveci U, Orman A, Aydin M. Ketamine may cause neurotoxic side effects for developing brains of young infants. Accessed 14 October 2022. Available: <https://www.pediatriconcall.com/pediatric-Journal/view/fulltext-articles/1002/J/0/0/529/>.
  31. Sigurdsson T, Duvarci, S. Hippocampal-prefrontal interactions in cognition, behavior and psychiatric disease. Front Syst Neurosci. 2016;26(9):190.
  32. Olney JW, Labruyere J, Wang G, Wozniak DF, Price MT, Sesma MA. NMDA antagonist neurotoxicity: mechanism and prevention. Sci. 1991;254(5037):1515-1518.
  33. Perez, A. What are the uses of ketamine?; 2021 Accessed 16 March 2023. Available: <http://www.medicalnewstoday.com/articles/302663#therapeuticuses>.
  34. Pharm-Huy LA, He H, Pharm-Huy C. Free radical: antioxidants in disease and health. Int J Biomed Sci. 2008;4(2):89-96.
  35. Seddik K, Nadget I, Abderrahmane B, Daoud H, Lekhmici A. Antioxidant and antibacterial activities of extracts from Artemisia herba alba asso. leaves and some phenolic compound. J Med Plants Res. 2010;4(13):1273-1280.
  36. Kharoubi O, Slimani M, Hamadouche A, Krouf D, Aoues A. Protective effect of wormwood extract on lead-induced neurotoxicity and cognitive disorder. Int J Green Pharma. 2010;4(3).
  37. Bassey IF, Umoh NM, Eru EM, Ajabab MO, NNenna WA, Kanu BE et al. Histochemical study of Nissl substance and astrocytes in a Pentylene-tetrazole-induced model of epilepsy treated with Musa paradisiaca stem juice. Niger J Physiol Sci. 2024;39(3).
  38. Eru EM, Bassey IF, Uruakpa KC, Paulinus SO, Oku ME, Umoh NM et al. Effects of aqueous extract of Talinum triangulare on the microanatomy of the hippocampus and short-term memory of scopolamine hydrobromide-induced Alzheimer's type cognitive dysfunction rats. Niger J Physiol Sci. 2024;39(2).
  39. Eru EM, Udo-affah GU, Bassey IF, Uruakpa KC, Paulinus SO, Oku ME et al. Efficacy of aqueous extract of Talinum triangulare on the microanatomy of the hippocampus and short-term memory of scopolamine hydrobromide-induced Alzheimer's type cognitive dysfunction rats. Niger J Physiol Sci. 2024;39(4).
  40. Guarraci FA, Ali M, Gonzalez CMF, Lucero D, Clemons LW, Davis LK et al. Antidepressants and sexual behaviour: weekly ketamine injections increase sexual behaviour initially in female and male rats. Pharmacol Biochem Behav. 2020;199: 173039.

**Disclaimer/Publisher's Note:** The statements, opinions and data contained in all publications are solely those of the individual author(s) and contributor(s) and not of the publisher and/or the editor(s). This publisher and/or the editor(s) disclaim responsibility for any injury to people or property resulting from any ideas, methods, instructions or products referred to in the content.

© Copyright (2024): Author(s). The licensee is the journal publisher. This is an Open Access article distributed under the terms of the Creative Commons Attribution License (<http://creativecommons.org/licenses/by/4.0>), which permits unrestricted use, distribution, and reproduction in any medium, provided the original work is properly cited.

*Peer-review history:*

*The peer review history for this paper can be accessed here:*

<https://www.sdiarticle5.com/review-history/121776>